

I hope you all had a restful break over the Christmas/New Year period. I had a couple of weeks at Ohope with my family. We had great weather and spent a lot of time at the beach. With the speed and pace that this year has started, the break seems long ago now. It is hard to believe we are already in March. I think as you get older, time seems to speed up!

Our last newsletter was just prior to ForestTECH. It was great to meet a number of you and put some names to faces. Being new to forestry, I learnt a huge amount from the speakers, presentations and displays. I can see the increasing use of technology will only improve the business of managing forests. It was great to see so many people looking at how we can do things better.



Larry

Within ATLAS we have had a few changes. In December 2009, Larry Goyon joined us as a software engineer, replacing Paul Ecroyd. Larry has extensive experience in designing, developing and supporting web based applications and systems. Originally from the Philippines, Larry has moved down from Auckland to enjoy the Bay of Plenty lifestyle. We welcome Larry to the team.

Some of you have noticed that we advertised recently for a new software support forester – this is because Jeremy Snook has been appointed to a newly created Business Analyst role (more on that overleaf). This allows him to concentrate on working with you, our clients, and the developers to come up with solutions that really make a difference. Jeremy was ideal for the new role with his industry experience combined with understanding the clients and our software. Congratulations Jeremy on a well earned appointment. We hope to introduce our new software support forester to you in our next newsletter.

It is that time of the year again! We are about to start our planning and budgeting for the next financial year. If you have any specific pieces of work you may want ATLAS involved in over the next year, let us know. This will help us schedule our work and ensure we have the right people available when you need them.

Our work is continuing with Future Forests Research and we are in the early stages of setting up our Forecaster User Group meeting for April or May this year. We are currently looking at options for a South Island and North Island meeting. We would be grateful for your feedback on the options and your suggested content.

On the social side, ATLAS has been competing in the local business house badminton competition, winning 4 out of 5 rounds. With another 2 rounds to go, we are hoping to make it to the finals.

Bob Forgan

ATLAS Manager

bob.forgan@atlastech.co.nz



Also in this issue

- Forecaster Version 1.6
- BikeWise Challenge
- Other changes at ATLAS
- Christians Countdown
- Jeremy's Jottings
- GeoMaster Update
- ATLAS Products



Forecaster Version 1.6

Forecaster version 1.6 was released just before Christmas. It contains the following major new features:

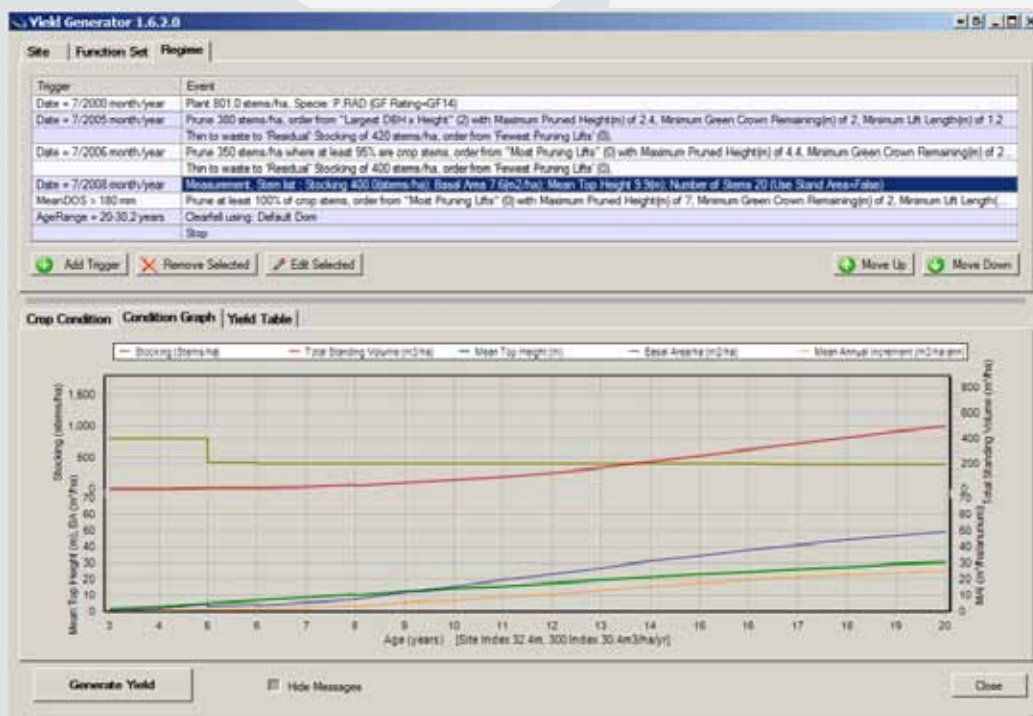
A new Yield Generator user interface (shown below) has been added. This interface (available to members of Future Forests Research's (FFR) Radiata Theme) is intended to provide everything the user needs on a single screen. The interface allows a yield table to be produced for a single Crop, Site, Function Set and Regime.

The Crop can now be specified as part of a regime. As shown in the Regime to the right, two new event types have been introduced – Plant and Measurement events. The Plant event must appear first, followed by any historic events, the Measurement event and finally any future events. The Plant event contains the planted stocking and species, while the Measurement event describes the crop as a subset, whole stand

[List. Crop information must be specified as part of a regime when using the Yield Generator interface, while in Forecaster it can be specified either this way or in a separate Crop entity. An additional heartwood model called "FFRWQ12009" (developed by Brian Rawley for WQI) is now available to members of the Radiata Theme of FFR. This model predicts the volume, SED and LED of heartwood within each log.

Clearfell events can now be triggered on a range of ages, instead of entering each year one at a time.

"AgeRange" has been added to the list of Trigger Types available in the regime, and the range can be entered in the format AgeRange = [StartAge]-[EndAge],[Increment (optional)]. For example, AgeRange = 25-35,2 will clearfell at ages 25, 27, 29, 31, 33, 35. AgeRange=27-30 will clearfell at ages 27, 28, 29, 30.



BikeWise Challenge

It's been that time of year again ... BikeWise Challenge Month. This is the time of year when we put some serious effort into banishing the post-Christmas stomach blowout. Supposedly BikeWise is ... "not about cycling the most kilometres, it's all about getting more people to experience and remember how fun and easy cycling can be." Haha ... we all know what it's really about though!

After last year's awe-inspiring 1940km effort by the ATLAS team we knew 2010 was going to be a difficult challenge. As this year's top cyclist in ATLAS I've been nominated to give a progress report on how we are going. I can report an even better result than any of the previous years in which we've been involved. With the help of Luke's regular lunchtime rides, Christian's jaw-dropping 80km-plus weekend rides, and the contributions from the rest of the ATLAS Technology team, we have reached the dizzying total of 3101km! This is way more more than a return trip from Wellington to Cape Reinga. ATLAS leads all other departments at Scion by over 200km. Well done team!!

To check out all our final results, go to:
<http://www.bikewisechallenge.co.nzorganisationsview/scion/atlas-technology>

John Threadgill



Other Changes at ATLAS...

With Bob's strong background in software development, his arrival has provided ATLAS with the opportunity to seriously review our software development business processes. This review has resulted in a few changes to the way we do things. While the typical recipe for a software development company calls for (roughly) equal parts business analysis, development, and testing, under ATLAS' previous model, our developers have primarily been doing a significant part of all three of these. While this has largely sufficed, it is not the most effective use of a developer.

Our current plan is to gradually move towards a more specialised structure of dedicated roles, which reduces the inefficiencies of context-switching. The first step towards this goal was to generate a Business Analyst role, which Jeremy has recently been appointed to. Once the software support role is filled, Jeremy's focus will turn to requirements and specification work for various current and proposed projects, as well as ensuring our commercial applications are enhanced to bring maximum benefit to our users. This in turn will free up our developers to concentrate more on areas of their core expertise. Future steps will be to employ a full-time tester and more business analysts, as demand dictates.

We will keep you informed as the consolidation of our business processes continues.

Christian's Countdown...

It's nearly mid-March and then I'll be off for a week's trekking in Nepal. I've had jabs in most limbs, accumulated the usual range of medications for gastro, malaria etc., and have been building fitness – hiking, biking, and badminton - all of which has come as a bit of a surprise to my body.

As many of you know, I've also been fundraising to support a World Vision development project in India that I'll be visiting after the trek. As a group (of about 20) we're each required to raise about \$2,500. Through the generous support of ATLAS, my friends, my colleagues at work, and many of you in the industry, I'm rapt to be delivering over \$3,300 towards this project. So my thanks go to all of you who contributed.



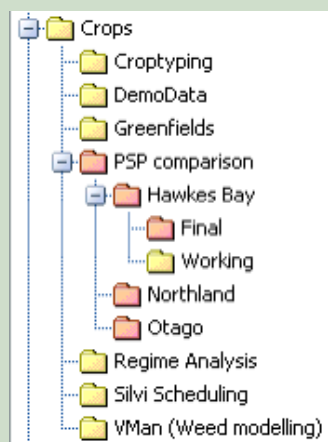
Jeremy's Jottings

Time for a tip to help out our Yield Table Manager and Forecaster users in multi-user environments.

In these applications, folders (and their contents) can be assigned as read-only for members of a particular Windows User Group (these are usually set up and maintained by your IT team). Once the groups are set up, a folder can be assigned to a group by following these steps:

1. In the Tools menu, select Enable Super User.
2. Select the folder you wish to restrict access to.
3. Right-click on the folder, and select "Set Windows User Group", then choose the appropriate group. This is the group which will have read-write access to the folder.
4. In the Tools menu, turn off Enable Super User.

By default, all sub-folders from the locked folder will also be locked, however this can be over-ridden so that users have access to lower levels in the folder hierarchy. Folders which are locked to the current user will appear red in the folder view (left-hand panel).



This is great for protecting 'Master' data sets from being modified unintentionally. If users without the appropriate rights for that group wish to modify the data, then they can simply copy the entities to a folder where they do have sufficient rights, and play with the copy to their heart's content.

In Yield Table Manager, this could be used to ensure only the Resource Forester has access to the master yield tables – these could then be modified (e.g. aggregated into broader log types), and stored in another locked folder to then be linked up with GeoMaster.

Hopefully this will be the last issue of my jottings before passing the baton to our new (as-yet-unknown) support guru, and devoting more of my time to the Business Analyst role.

Thanks for reading!

Jeremy

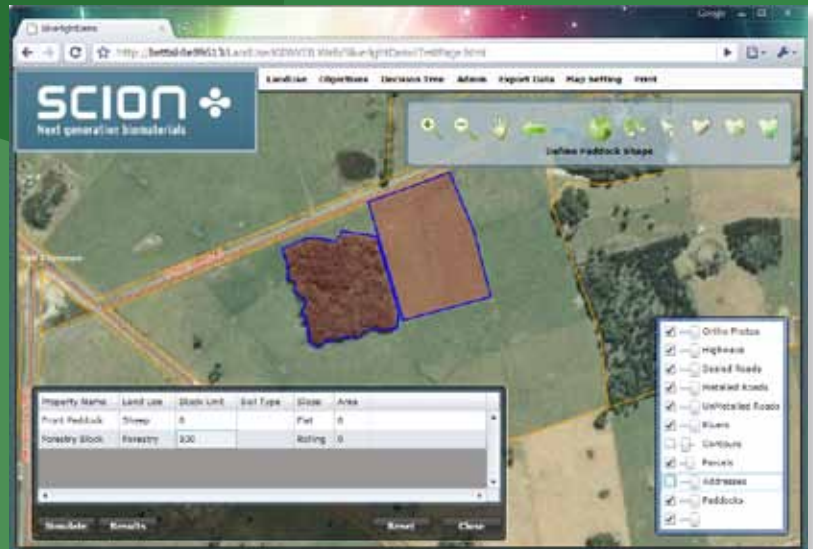
GeoMaster Update

The skills of the GeoMaster team have been in hot demand of late – but not in relation to GeoMaster. Luke has become a lead developer for a web-based decision support product for evaluating land-use options. Using various GIS (Geographic Information System) layers as a basis, users can identify areas of their property and plan scenarios for alternative land uses. The scenarios are then evaluated in terms of economics, environmental impact, Green House Gas emissions etc. Wayne is working closely with the USDA (United States Department of Agriculture) to enhance the SprayAdvisor tool he has been working on for many years. This tool models aerial spray drift, and in particular, he is working on generating droplet size distributions to model deposition within the canopy. We are all contributing to a face-lift for the PSP System (Permanent Sample Plots) after ten years of humming quietly in the background. A major part of the upgrade involves porting the DOS based PSP data capture tool to Fieldman.

Regardless of these diversions, GeoMaster support remains a priority and barely a day goes by without us needing to attend to an urgent issue of one sort or another. New development on the other hand has received less attention than usual, and at this stage we don't feel there will be enough new material to warrant having the usual users meeting in May. There will still be product updates during the year

as we resolve problems, introduce enhancements, and migrate code to the current development environment.

In October we are expecting Peter Eredics, the Forest Solutions Manager at ESRI, to be visiting New Zealand, and together with Eagle we are planning to hold a GIS in Forestry conference here at Scion to coincide with his visit. We also expect to host the usual end-of-year GeoMaster users meeting around the same time to ensure that those travelling to Rotorua get the most benefit from their trip.



TO LEARN MORE ABOUT ATLAS PRODUCTS

visit www.atlastech.co.nz

Forestry information management and decision making support tools, to maximise the value of your business:

- Forest and land information (ATLAS GeoMaster®)
- Forest resource assessment (ATLAS Cruiser®)
- Forest management DSS (ATLAS Forecaster®)
- Quality assurance (ATLAS SilviQC)
- Forest estate planning (FOLPI)
- Data collection (ATLAS FieldMan)
- Harvest planning (ATLAS Harvest Manager)
- Harvest scheduling and log allocation (ATLAS Harvest Scheduler/ATLAS Market Supply)
- Inventory design (ATLAS Assessment Planner)
- Map production (ATLAS GeoMapper)
- Yield Table Management and Manipulation (ATLAS Yield Table Manager)



ATLAS Technology, 49 Sala Street,
Private Bag 3020, Rotorua 3010, New Zealand.

To contact ATLAS phone **+64 7 343 5624** or **0800 RUN ATLAS (NZ only)**



ATLAS Technology is part of Crown Research Institute, Scion

SCION 
Next generation biomaterials