

Forecaster Carbon Modelling

Date: May 2010



Leadership in forest and environmental management, innovation and research

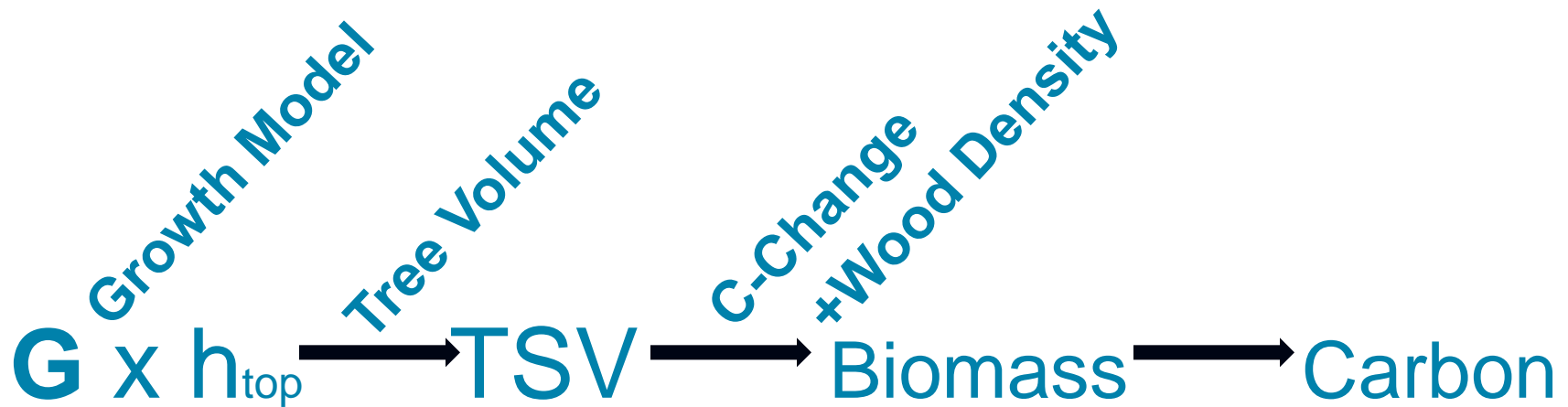


Carbon Modelling

- We need to predict Carbon Sequestration.
- C-Change is a published, tested model.
- C-Change works by estimating biomass in several “pools”:
 - • Above ground live,
 - • Below ground live,
 - • Dead woody litter,
 - • Fine litter,
 - • Shrub under-storey.

Carbon Modelling

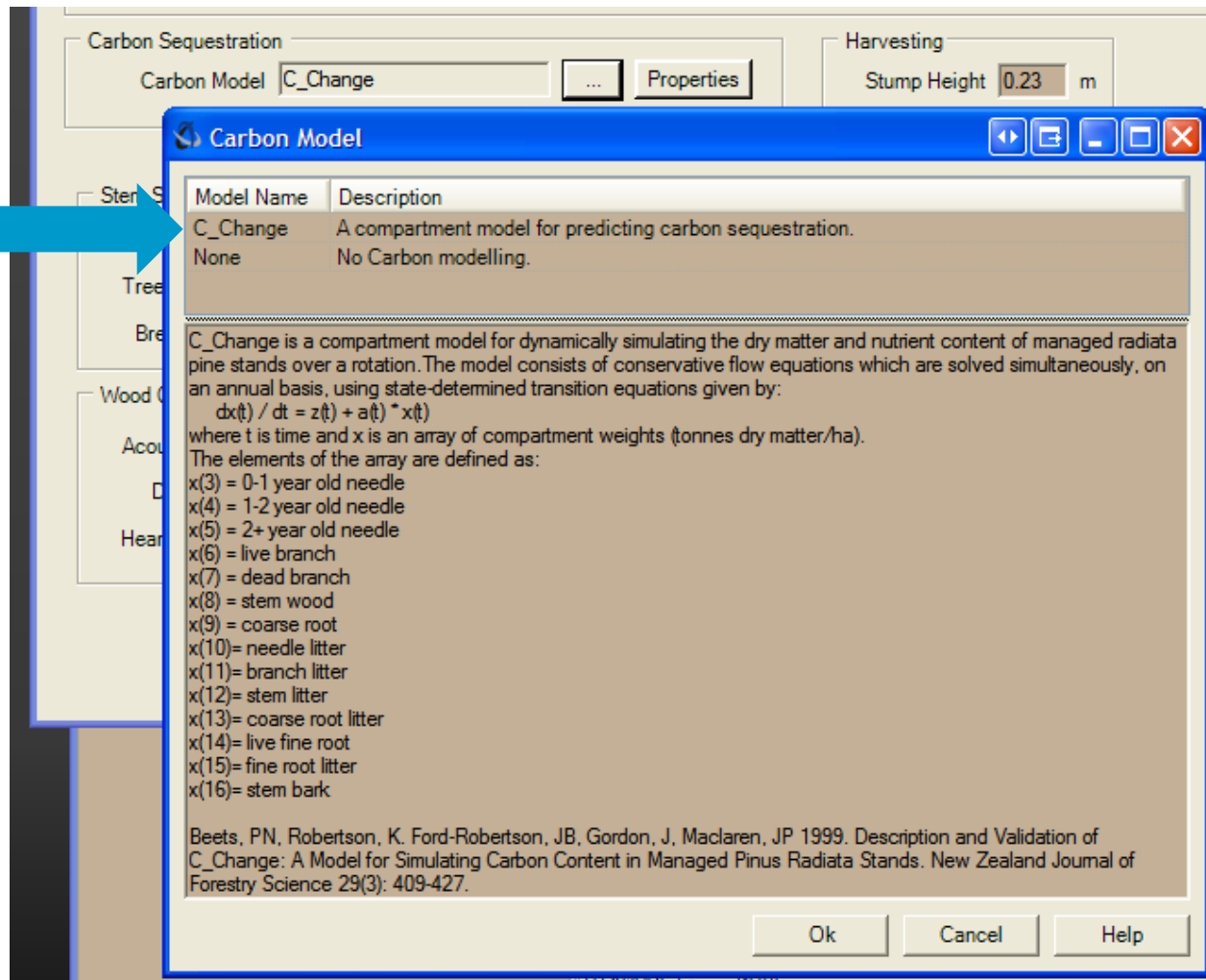
- Carbon is predicted from biomass via estimates of density.



- Key prediction components: growth model, height model, tree volume equation.

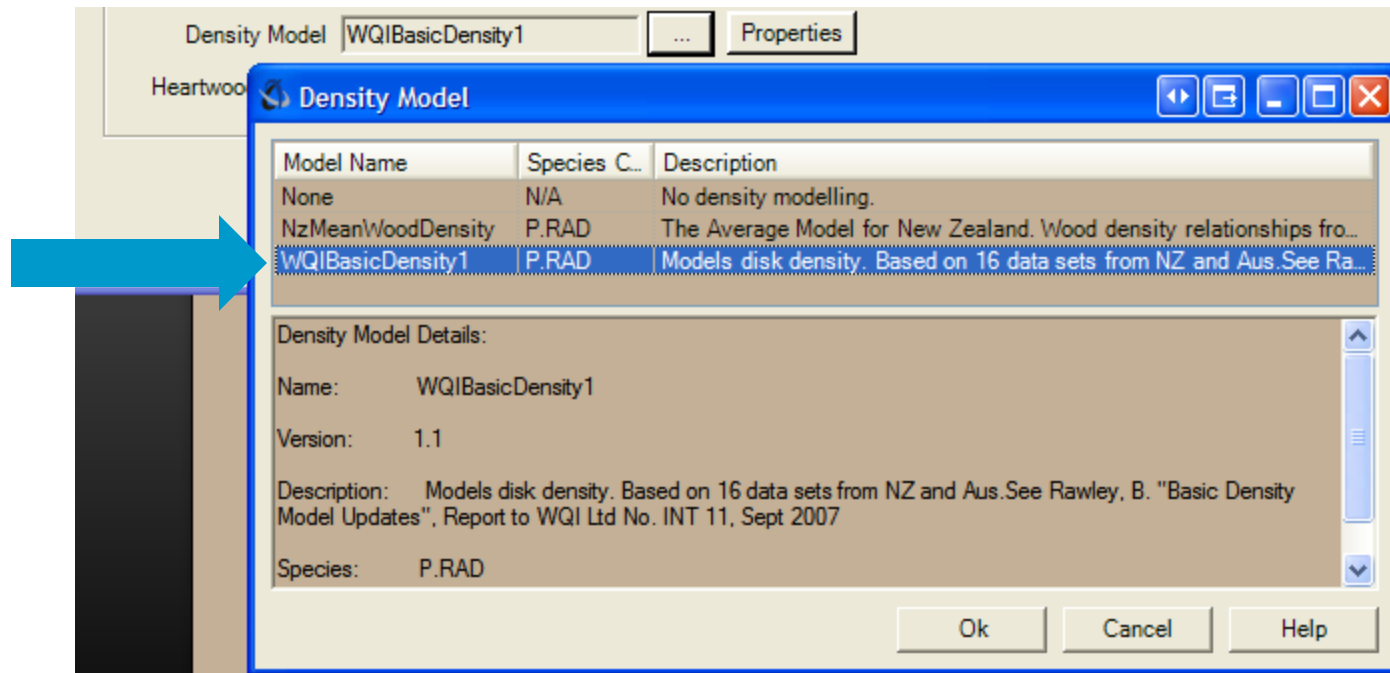
Carbon Modelling

- Specify a Carbon Model in the Function Set.



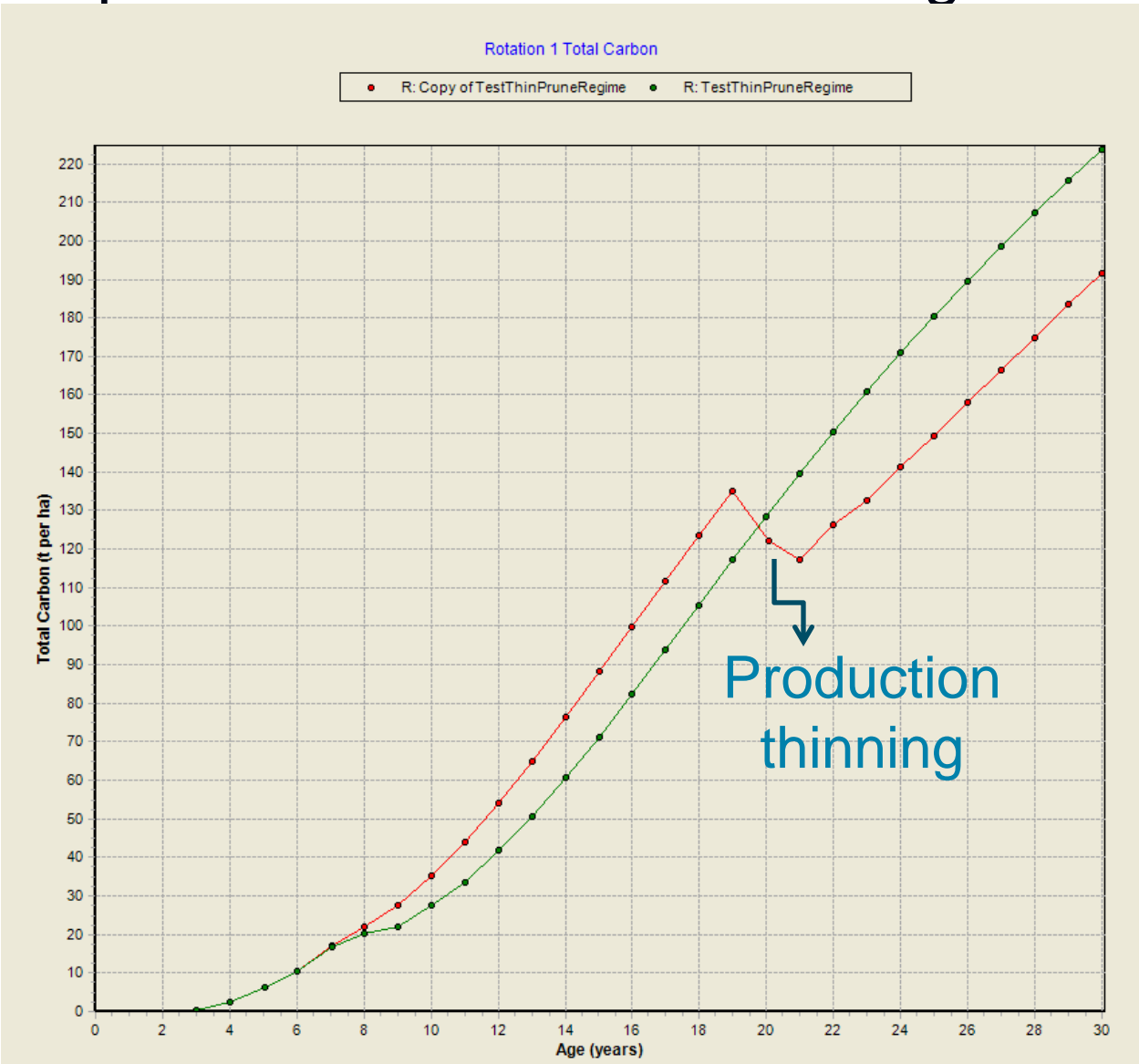
Carbon Modelling

- Specify a Density Model in the Function Set.



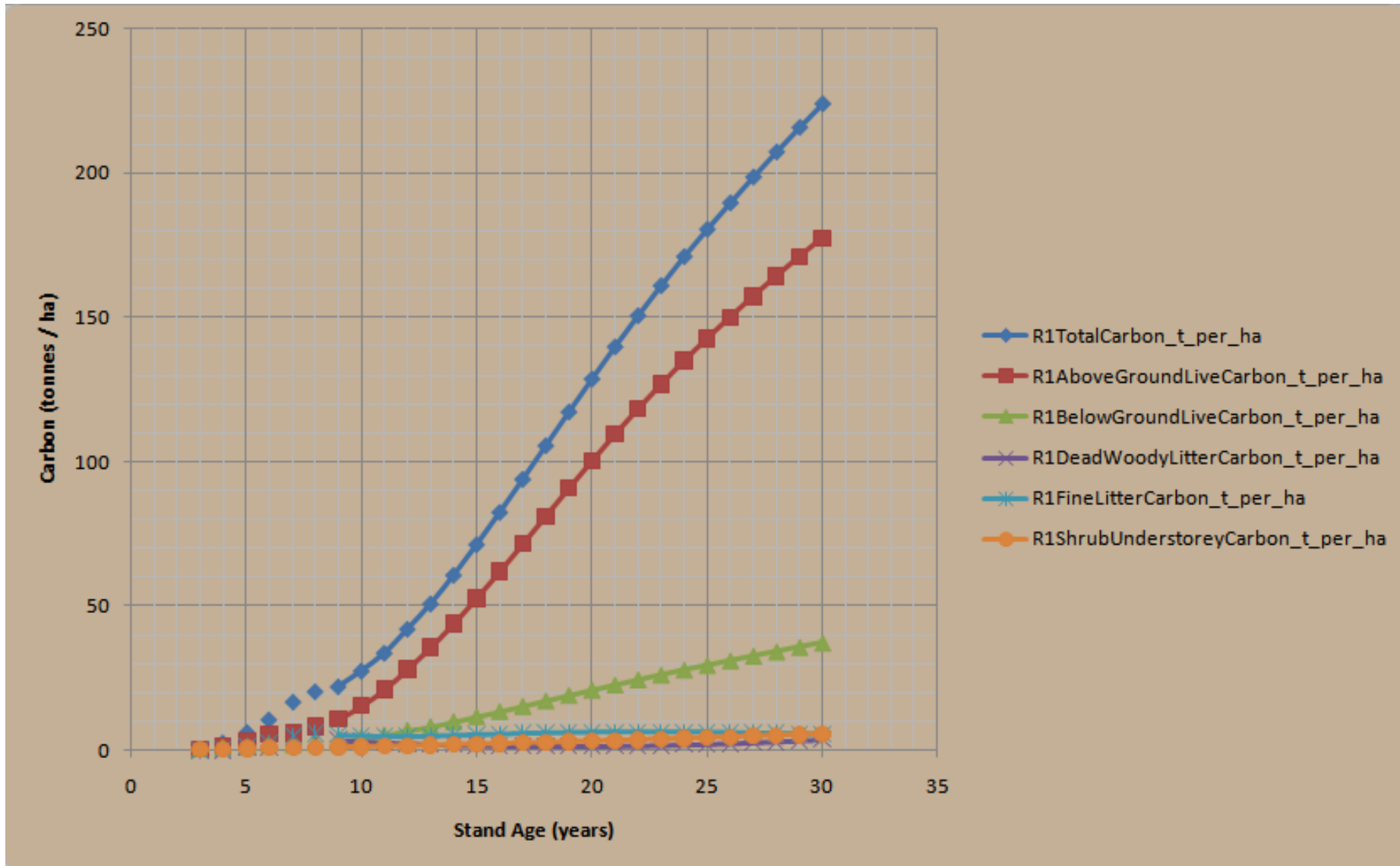
Carbon Modelling

- Example: Total Carbon for two regimes



Carbon Modelling

- Example: R1 Components of total carbon on site.



Carbon Modelling

- Example: R2 Components of total carbon on site.

