

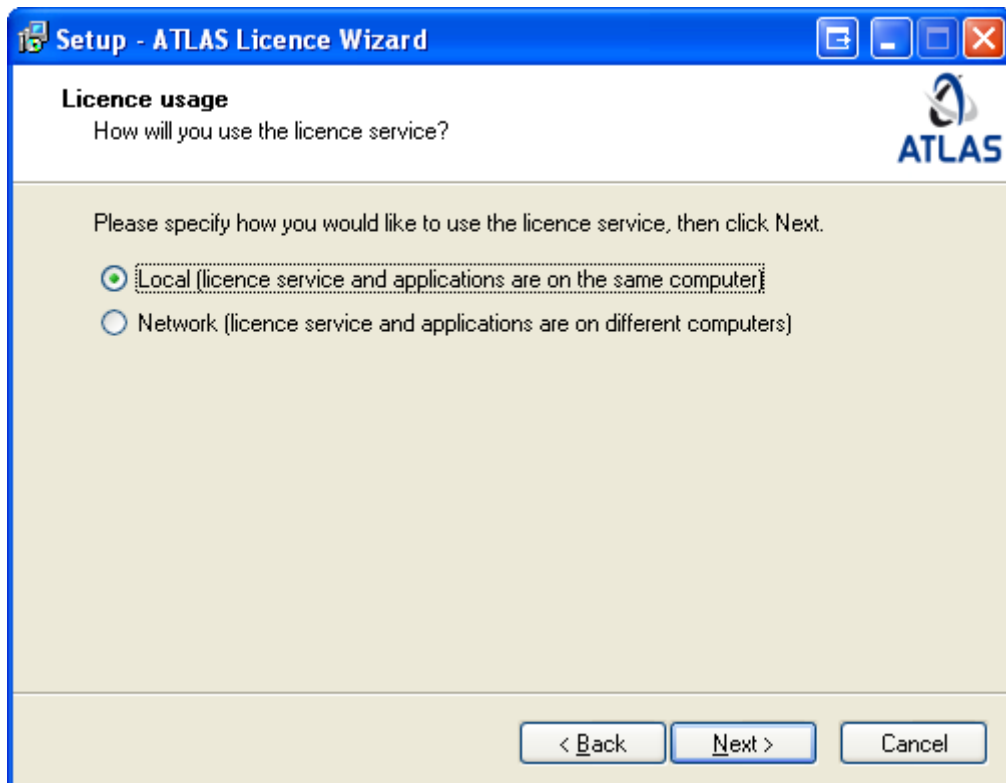
Installing the Licensing Service and Licensing ATLAS Software

If you have any problems with any part of the installation process, please contact ATLAS support (software.support@atlastech.co.nz).

1. To install the new licensing service, run **SetupLicenceService.exe**

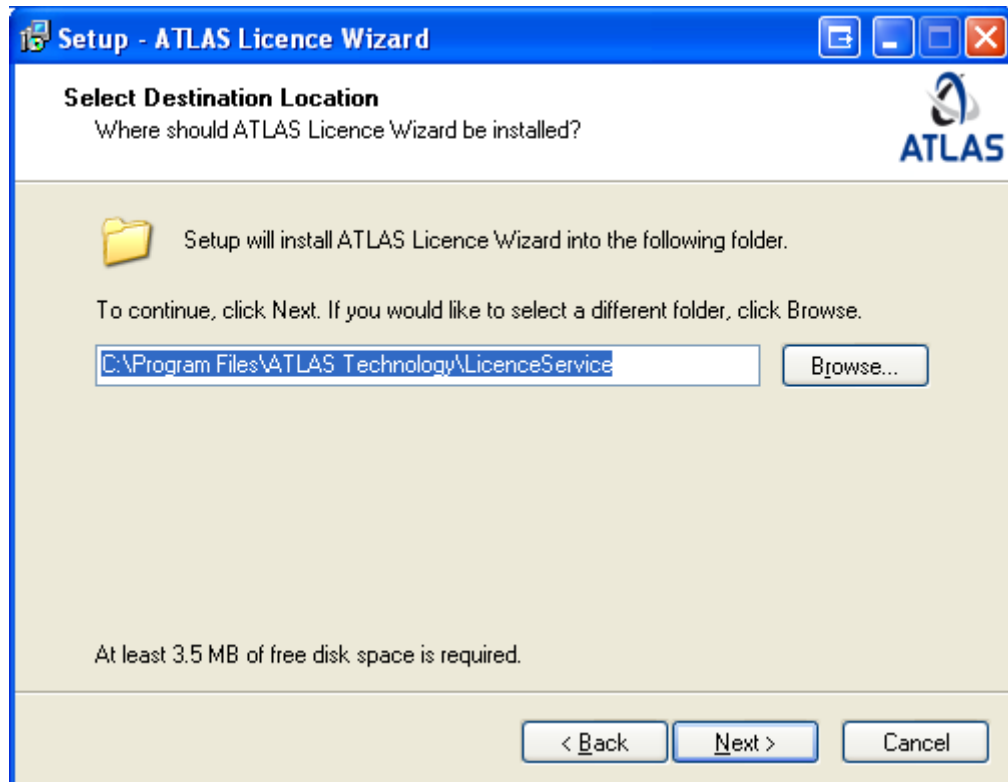


2. When the opening screen above appears click "Next".

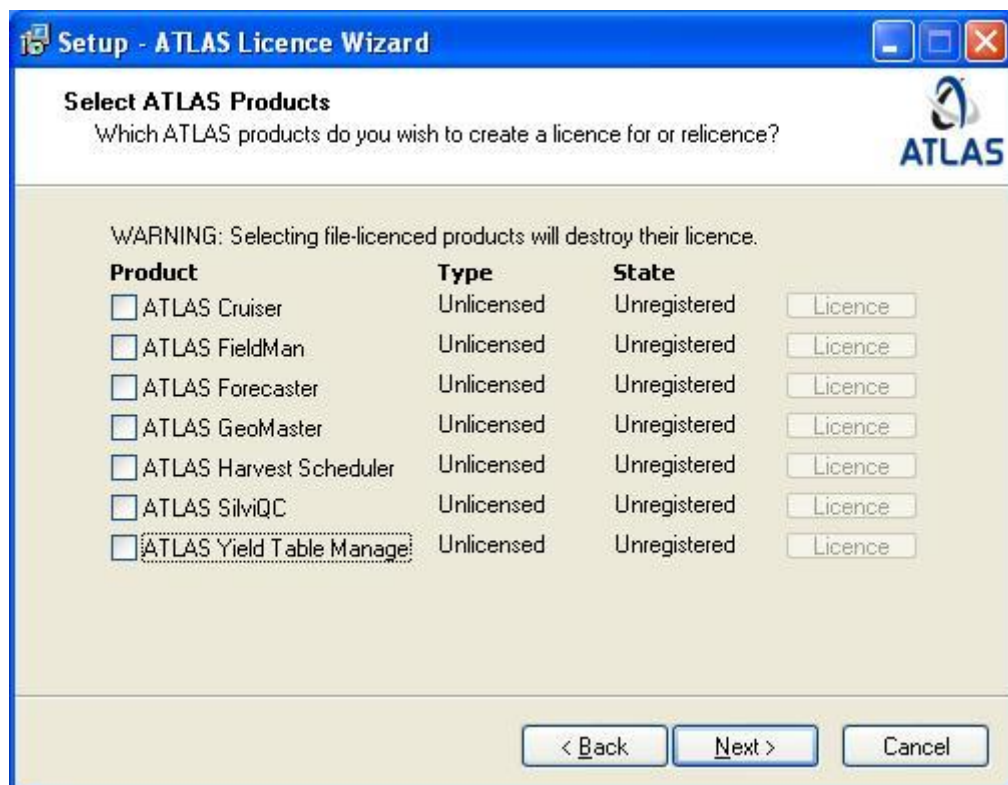


3. If this is a stand-alone installation (i.e. the licensing service and the applications are to run on the same computer) then select "Local" and click "Next".

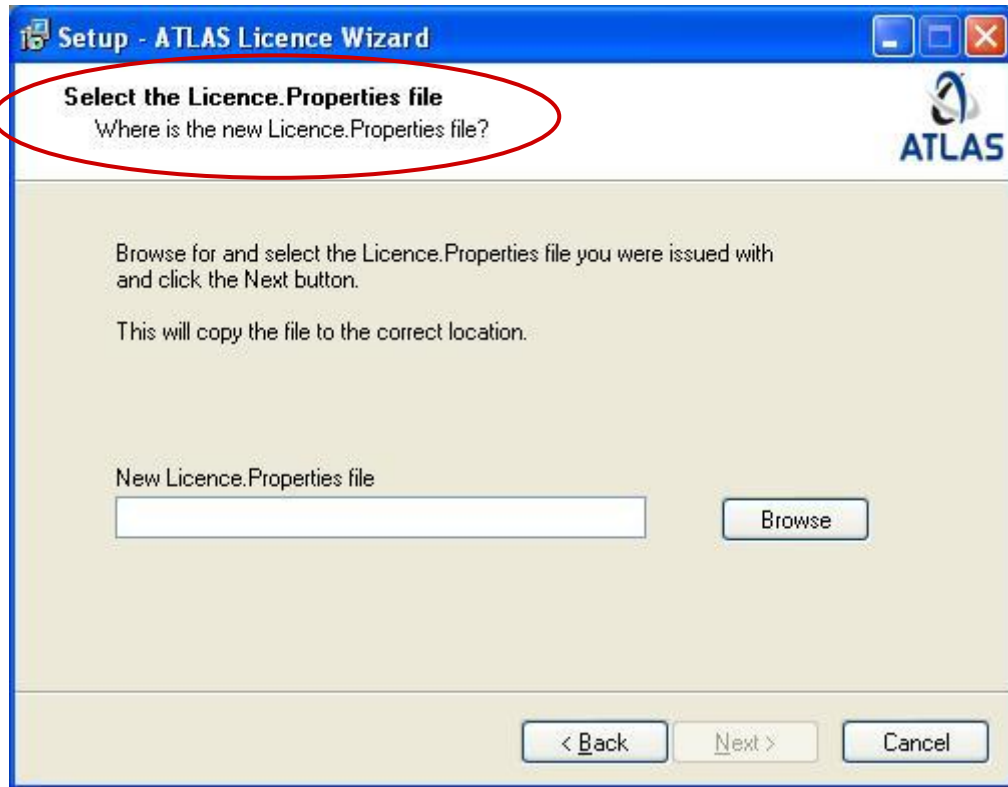
If this is a multi-user installation (i.e. the licensing service and the applications are to run on different computers) then select “Network” and click “**Next**”. Note that if you select “Network” then you must have the same drive mapping as client machines to the folder which will contain the ATLAS.ini file. If this is not the case the path to the Licence.Properties file will be incorrect.



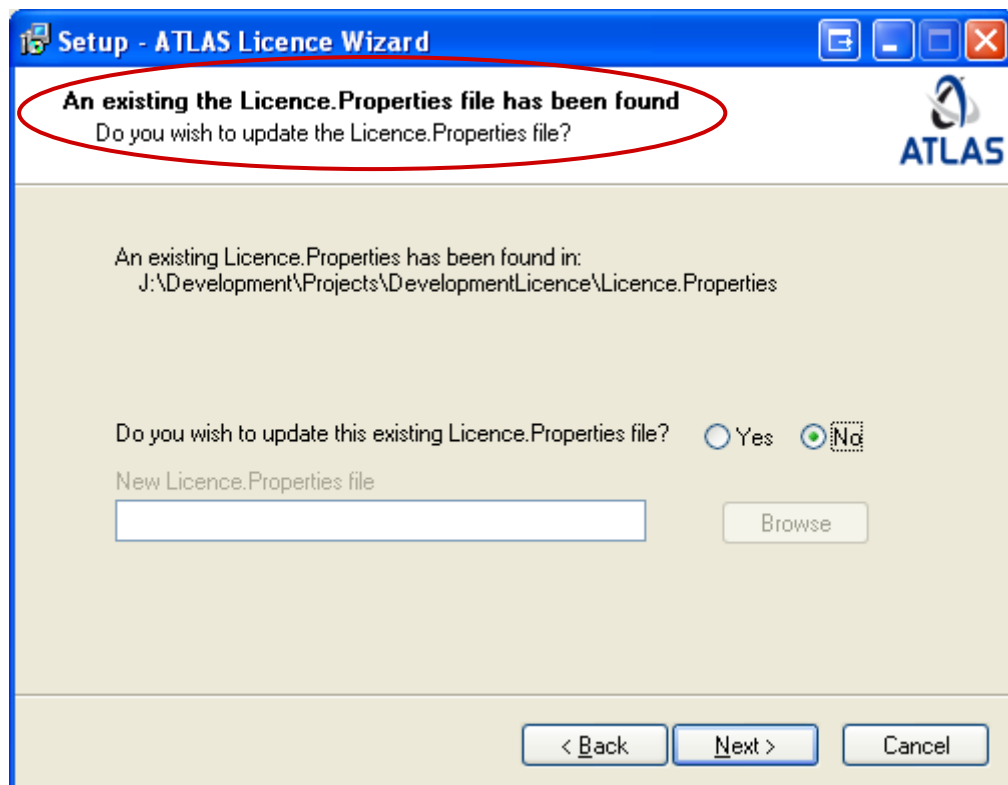
4. Select the destination location and click “**Next**” (we recommend using the default location).



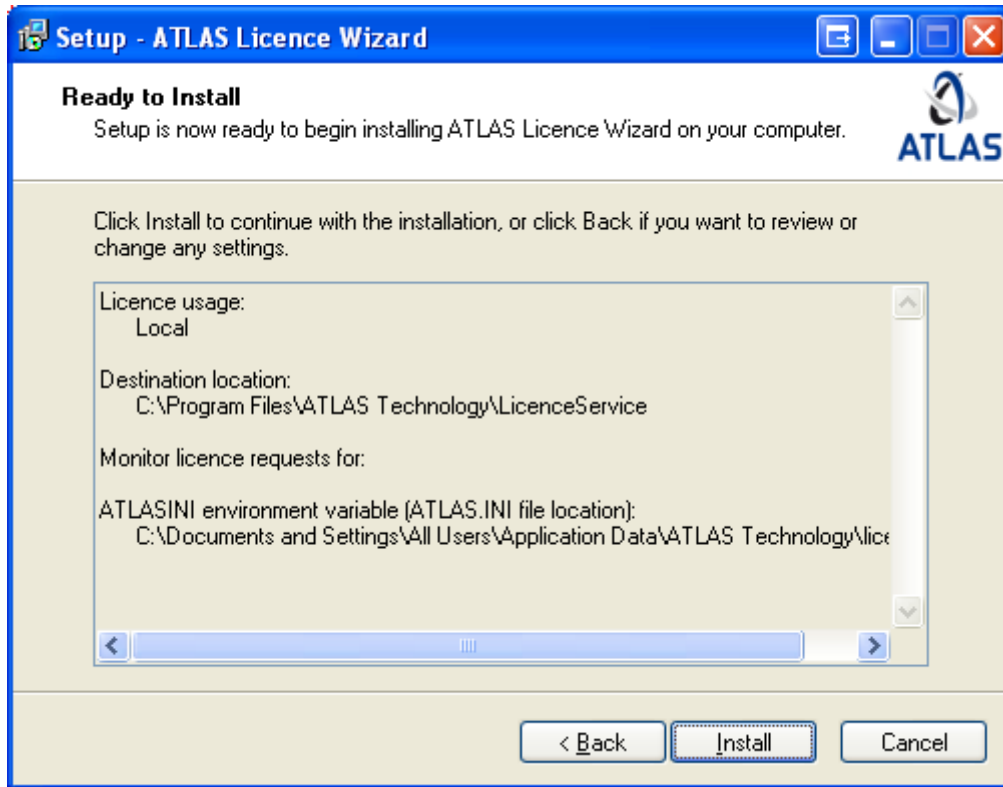
5. Do not tick any Products at this point. All you need to do is click “**Next**”. After the licence service installation has been completed you can return to this page at any time to activate licences.



6. If this is a clean install (i.e. the ATLAS licence service has not been installed on this machine in the past), then you will need to browse to the location of the Licence.Properties file (this should have been emailed to you by ATLAS support), then click “**Next**”.



7. If the Licence.Properties file already exists (see encircled text), and this does not need to be updated, then just click “**Next**”. If the file exists but needs to be updated (e.g. ATLAS support has emailed you a new file to give access to new models), then browse to the location where you saved it and click “**Next**”.



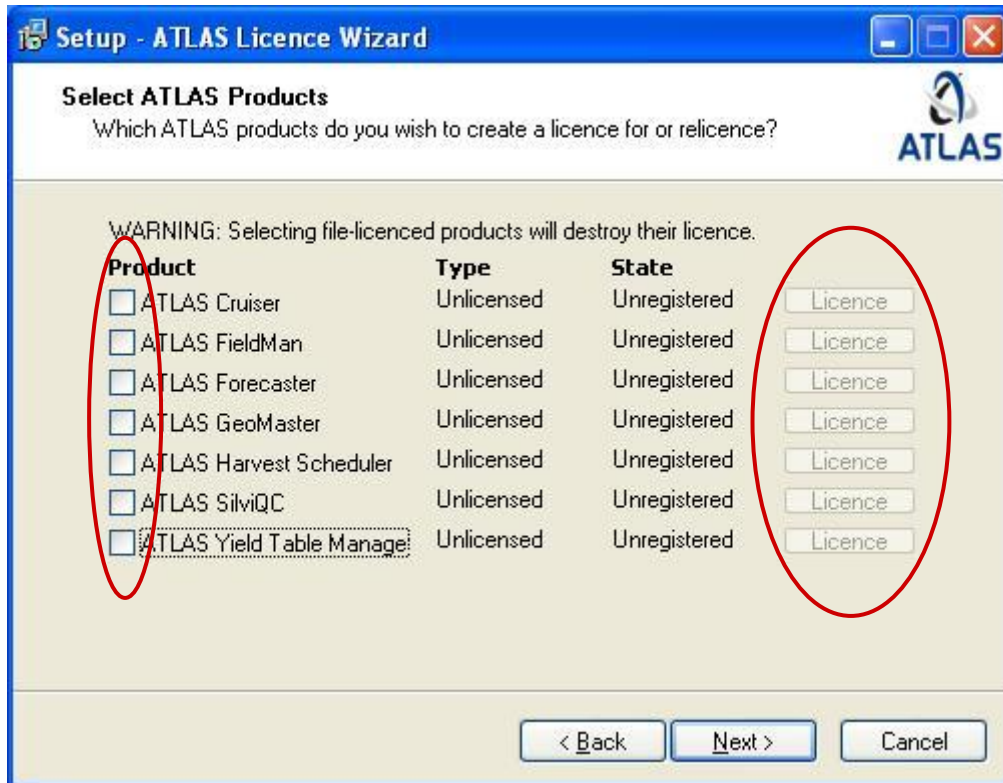
8. You will see a dialog similar to the one above, which shows the selections you have made. If the selections are correct click the “**Install**” button otherwise click the back button and correct your selections.



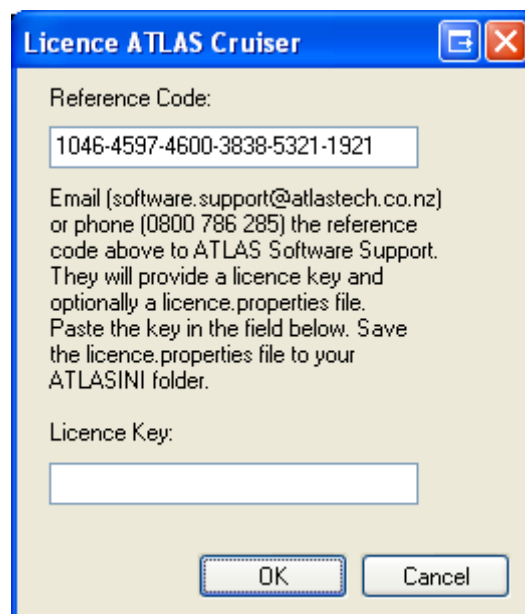
9. After you have clicked install the setup wizard will install the appropriate files and finally display the dialog above. Click Finish to finish the installation.

You have now got the latest Licence Service installed on your machine, which allows you to licence several products at the same.

- To licence the Software, go to the Start Menu and select *Programs / ATLAS Technology / Licence Service / ATLAS Licence Wizard*.
- Follow steps 1 to 4 above and this time tick the box in front of the product you want to licence.



- Once you have selected the application you wish to licence, the “**Licence**” button will be enabled. Click the “**Licence**” button and the following dialog will appear.



- Email this Reference code (copy and paste it into the email body) to ATLAS Technology (software.support@atlastech.co.nz).

14. To generate more than one Reference code, click “**Cancel**” and generate codes for all other products you would like to licence by ticking the box and selecting the “Licence” button.
15. If you wish, you can cancel and exit from the Licence Service process after generating the Reference code(s) while you are waiting for the Licence key.
16. To continue, start again at step **10**.
17. Once you have received the matching licence key, enter it into the *Licence Key* field and click “**OK**”. This will return you to the previous dialog. Once you have licensed one or more applications click “**Next**” and follow steps **6** to **9**.